



Volkswagen

The Caravelle



The perfect shuttle.

Setting the standard for passenger transport for over 30 years.

Caravelle's confident new look makes it perfect for professional transport, while the versatile package ensures it's great for family duties too.



Cover image shown with optional Exterior Upgrade Package.

Standard for Caravelle Trendline.

- 2.0 litre TDI340 turbo-charged direct injection diesel engine with BlueMotion Technology
- Max power 103kW @ 3,500rpm
- Max torque 340Nm @ 1,750-2,500rpm
- 7 Speed Direct Shift Gearbox (DSG) with sport mode and Tiptronic function
- Front wheel drive
- Fuel consumption (combined) 7.7L/100km**

Exterior

- Halogen headlights
- Daytime Running Lights (DRL)
- Sliding doors, left and right
- Body coloured bumpers, door handles and exterior mirror housings
- Lifting rear tailgate with window and wiper/washer
- 16-inch steel wheels with wheel covers
- Full sized steel spare wheel

Interior

- Nine (9) seats
- Front seats height and lumbar support adjustment
- 2-seater bench seat in 2nd row with child seat anchors
- 2-seater bench seat in 3rd row with child seat anchors
- 3-seater bench seat in 4th row
- "Kutamo" cloth seat upholstery
- Leather-wrapped steering wheel, height and reach adjustable

Function

- Stop/start system and regenerative braking
- "Composition Colour" radio system with USB/AUX/SD input
- Six (6) loudspeakers
- Bluetooth® phone and audio streaming compatibility
- Steering wheel audio controls
- Cruise Control
- Electronic immobiliser
- Power steering
- Central locking with remote control
- Power windows and heated exterior mirrors
- "Climatronic" 3-zone air conditioning
- Rear window sunshades

Safety

- Driver Fatigue Detection*
- Multi-Collision Brake (MCB)
- Hill-Start Assist
- Electronic Stabilisation Programme (ESP)
- Traction Control System (TCS)
- Anti-Lock Braking System and Brake Assist
- Driver and front passenger front and side/head airbags
- Rear Park Distance Control*
- Rear View Camera*

* Safety technologies are designed to assist the driver, but should not be used as a substitute for safe driving practices.

**Fuel consumption figures according to ADR 81/02 derived from laboratory testing. Factors including but not limited to driving style, road and traffic conditions, environmental influences, vehicle condition and accessories fitted, will in practice in the real world lead to figures which generally differ from those advertised. Advertised figures are meant for comparison amongst vehicles only.

Spacious and Flexible

Caravelle's unique seating concept lets you customise the interior for up to 9 people and luggage.

The modular seat mounting system in the Caravelle allows the removal of any of the rear seats, expanding luggage space in a matter of moments.

The second and third row 2-person bench seats include ISOFIX and top tether anchors for the secure fitment of child seats.



Overseas model shown.



Reliable, safe and cleverly thought out.

The driver's cab in the Caravelle Trendline is equipped to cope with every challenge a busy day has to offer. High-quality materials, 3-zone climate controlled air conditioning and an advanced touch-screen infotainment system ensure Caravelle stands out.



App-Connect featuring Apple CarPlay®

Caravelle is fitted with the "Composition Colour" radio system with 5-inch colour touch screen, AUX, USB and SD card inputs plus Bluetooth® with audio streaming. Upgrading to the "Composition Media" radio or "Discover Media" navigation system (shown above) provides access to Volkswagen's App-Connect™ system for integration with your smartphone.

~App-Connect is compatible for selected apps with the latest smartphone versions of iOS and Android, active data service, and connection cable (sold separately).

Cutting-edge safety systems.

Prepared to handle almost any situation.

To ensure that every drive ends as stress-free as it begins, the Caravelle is equipped with various safety systems, which are activated in critical situations as a preventative measure. Part of the onboard standard equipment is the Multi-Collision Braking System. Moments after an accident, the vehicle begins a phased braking action down to 10 km/h in order to prevent secondary collisions. Should an impact nonetheless result, driver, front passenger, and side/head airbags provide optimal protection to occupants - as standard.



Front Driver and Passenger Airbags.

Driver, front passenger and front side/head airbags offer occupants the best possible protection in the event of head-on and side impacts.



Driver Fatigue Detection*.

Uses visual and acoustic warning signals to recommend that the driver takes a break as soon as it registers driving behaviour that indicates tiredness.



Anti-Lock Braking System (ABS).

Prevents wheel lock and maintains manoeuvrability.



Brake Assist System.

Registers the speed at which the brake pedal is pressed. During a reflexive or emergency braking action, it ensures that full brake pressure is built up more quickly.



Electronic Stabilisation Programme.

Prevents under- or over-steering via targeted braking of individual wheels.



Traction Control System (TCS).

Prevents wheelspin.



Electronic Differential Lock (EDL).

Distributes the engine torque to the tyres without slippage.



Hill Start Assist.

Prevents the vehicle from rolling back on inclines and makes handling easier when starting up on uphill slopes.



Daytime Running Lights.

Switch on automatically when the ignition is activated and lower the risk of an accident in daylight through increased visibility on the road.



Cruise Control.

As of a speed of 30 km/h, it maintains the set speed depending on uphill and downhill inclines.



Multi-Collision Braking System*. Triggers braking after a collision, with the aim of preventing secondary collisions.

The Multi-collision Braking System activates when two independent sensors detect an accident. After a short delay, the vehicle begins a phased braking action down to 10 km/h, during which the driver can take over at any time.

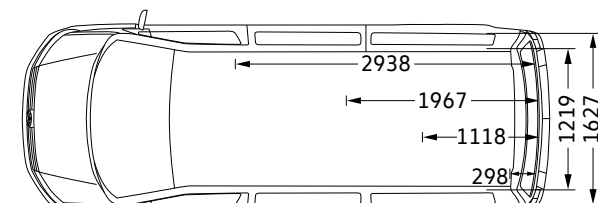
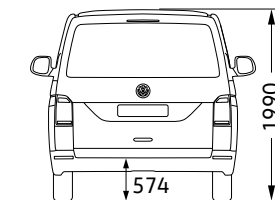
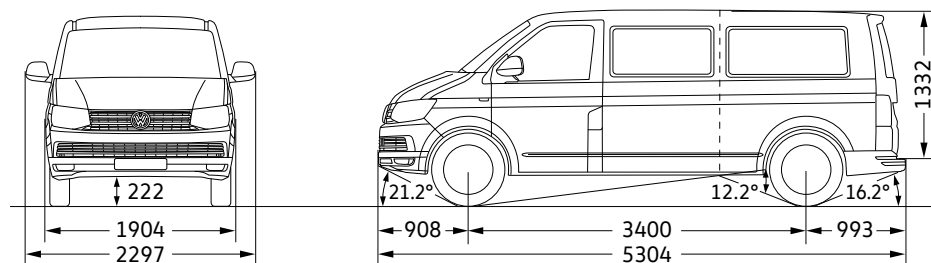


Rear Park Distance Control*. Emits audible warnings when obstacles are detected behind the vehicle when parking, and also provides a visual display of the vehicle's distance from the obstacles (Discover media shown).



Rear View Camera (RVC)*. Simplifies parking by showing a limited view of the area behind the vehicle on the display of the radio or navigation system. Additional static guidelines facilitate the parking process (Discover media shown).

Dimensions



Vehicle dimensions shown in mm.

Full specifications are available at www.volkswagen-commercial.com.au

Exterior Colours

Solid paint finishes



Candy White | Solid paint finish | B4B4



Cherry Red | Solid paint finish | 4B4B



Reflex Silver | Metallic paint finish | 8E8E



Indium Grey | Metallic paint finish | X3X3



Deep Black | Pearl effect paint finish | 2T2T



Acapulco Blue | Metallic paint finish | 2W2W



Starlight Blue | Metallic paint finish | 3S3S



Bamboo Green | Metallic paint finish | 3T3T



Mojave Beige | Metallic paint finish | 1B1B



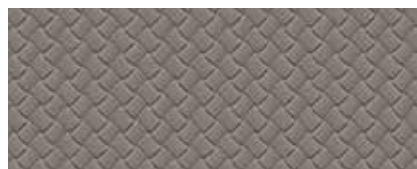
Chestnut Brown | Metallic paint finish | H4H4

Metallic and Pearlescent paint finishes

Seat upholstery



Kutamo
Cloth seat upholstery | Moon Rock Titanium Black



Mesh
Leatherette seat upholstery* | Moon Rock Titanium Black | Optionally available

The Caravelle

Volkswagen Group Australia Pty Ltd
24 Muir Road Chullora NSW 2190
ABN 14 093 117 876

Printed in Australia
October 2018
www.volkswagen.com.au

Publication: VWCCARFLYMY19

Your Volkswagen Dealer.

Important information

Apple CarPlay® is a registered trade mark of Apple Inc. Android Auto™ is a registered trade mark of Google Inc. MirrorLink® is a registered trade mark of Car Connectivity Consortium LLC. Bluetooth® is a registered trade mark of Bluetooth SIG Inc.

Volkswagen is distributed by Volkswagen Group Australia Pty Ltd (ABN 14 093 117 876) of 24 Muir Road Chullora, NSW 2190. Specifications are as planned at October 2018, for Model Year 2019 and are subject to change without notice or obligation. All information in this brochure are correct at the time of publication, however variations may occur from time to time and Volkswagen, in so far as it is permitted by law to do so, shall not be liable in any way as a result of any reliance by any person on anything contained in this brochure. Authorised Volkswagen Dealers will provide up-to-date information on model application, design feature, prices, and availability on request.